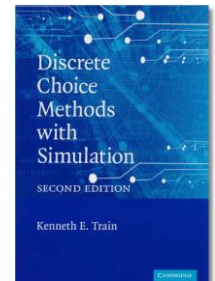
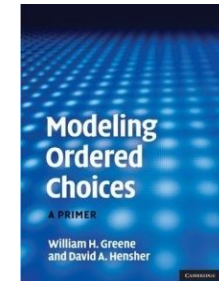
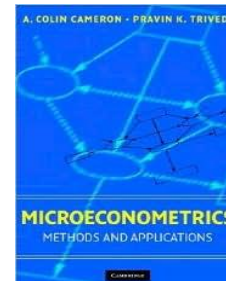
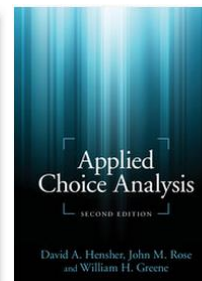
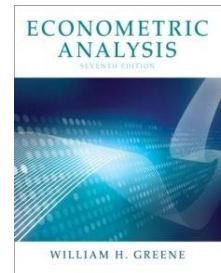


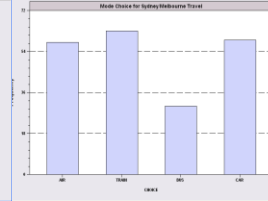
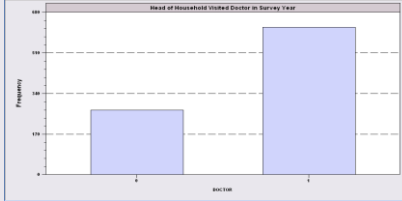
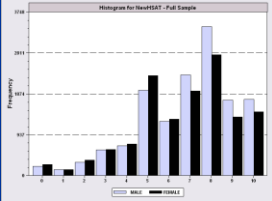
Discrete Choice Modeling Introduction

Discrete Choice Modeling

- 0 Introduction**
- 1 Summary**
- 2 Binary Choice**
- 3 Panel Data**
- 4 Bivariate Probit**
- 5 Ordered Choice**
- 6 Count Data**
- 7 Multinomial Choice**
- 8 Nested Logit**
- 9 Heterogeneity**
- 10 Latent Class**
- 11 Mixed Logit**
- 12 Stated Preference**
- 13 Hybrid Choice**
- 14 Spatial Data**

William Greene
Stern School of Business
New York University

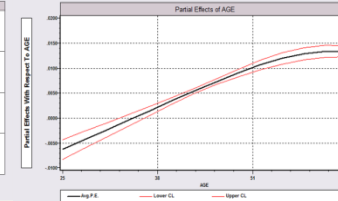
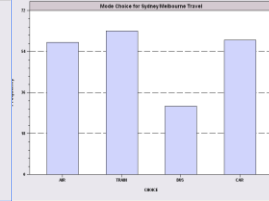
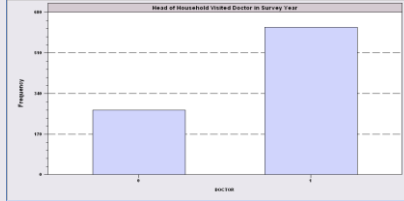
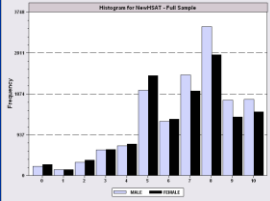




Discrete Choice Modeling Introduction

Discrete Choice Modeling

- Theoretical Foundations
- Econometric Methodology
 - Regression Analysis
 - Binary Choice Models
 - Discrete Choice Models
 - Multinomial Choice Models
- Model Building, Econometric Methods
 - Statistical Bases, Specification Issues
 - Estimation, Coefficients, Partial Effects
 - Analysis
 - Inference and Hypothesis Testing
- Applications



Discrete Choice Modeling Introduction

Agenda

Day 1: Foundations

- 0 Introduction
- 1 Methodology: Basic Regression Modeling
- 2 Binary Choice: Estimation, Inference, Analysis, Partial Effects
- 3 Panel Data: Fixed and Random Effects
- 4 Bivariate Probit: Bivariate, Recursive and Multivariate Models

Day 2: Model Extensions; Multinomial Choice

- 5 Ordered Choice: Ordered Probit, Vignettes
- 6 Count Data: Poisson, Negative Binomial, Two Part Models
- 7 Multinomial Choice: The Multinomial Logit Model
- 8 Nested Logit: Nesting, Multinomial Probit Model

Day 3: Multinomial Choice, Advanced Models, Stated Choice

- 9 Heterogeneity: Scale Effects, WTP, RP and LC
- 10 Latent Class: Finite Mixtures, Attribute Nonattendance
- 11 Mixed Logit: Random Parameter Models
- 12 Stated Preference: Choice Experiments, Best/Worst Data
- 13 Hybrid Choice: Mixed Discrete and Continuous Choice
- 14 (Time permitting) Discrete Choice Models for Spatial Data