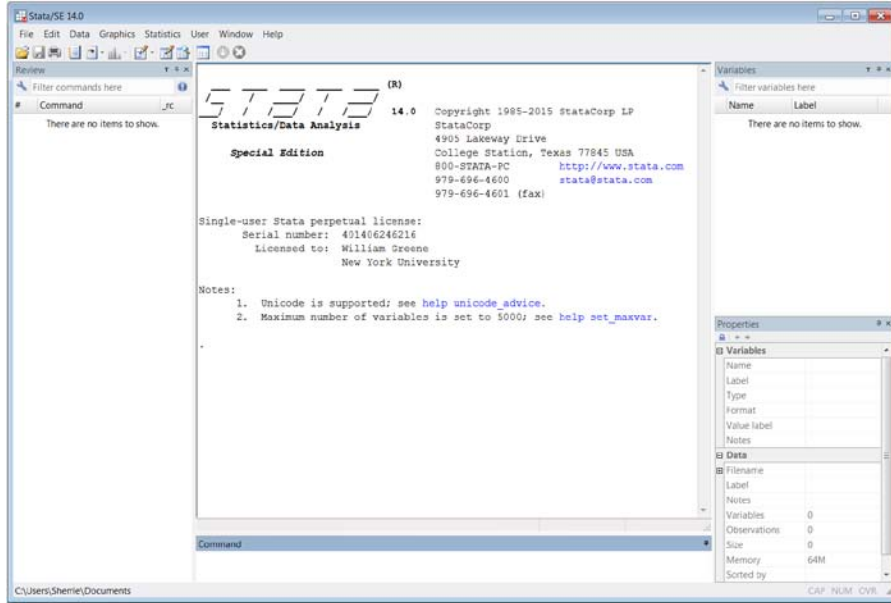


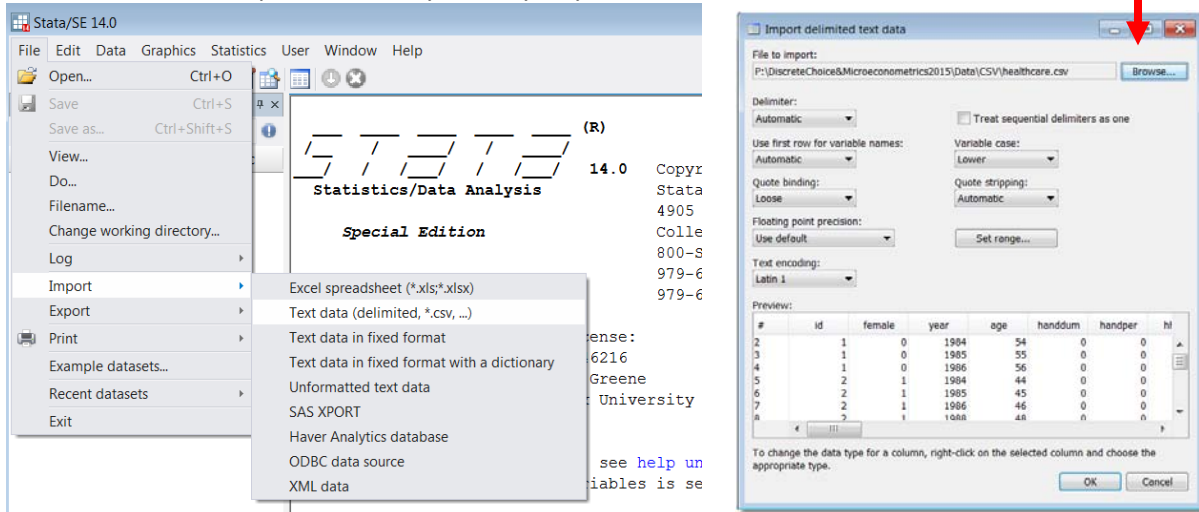
Stata Quick Start

0. Launch the program. The desktop will appear.

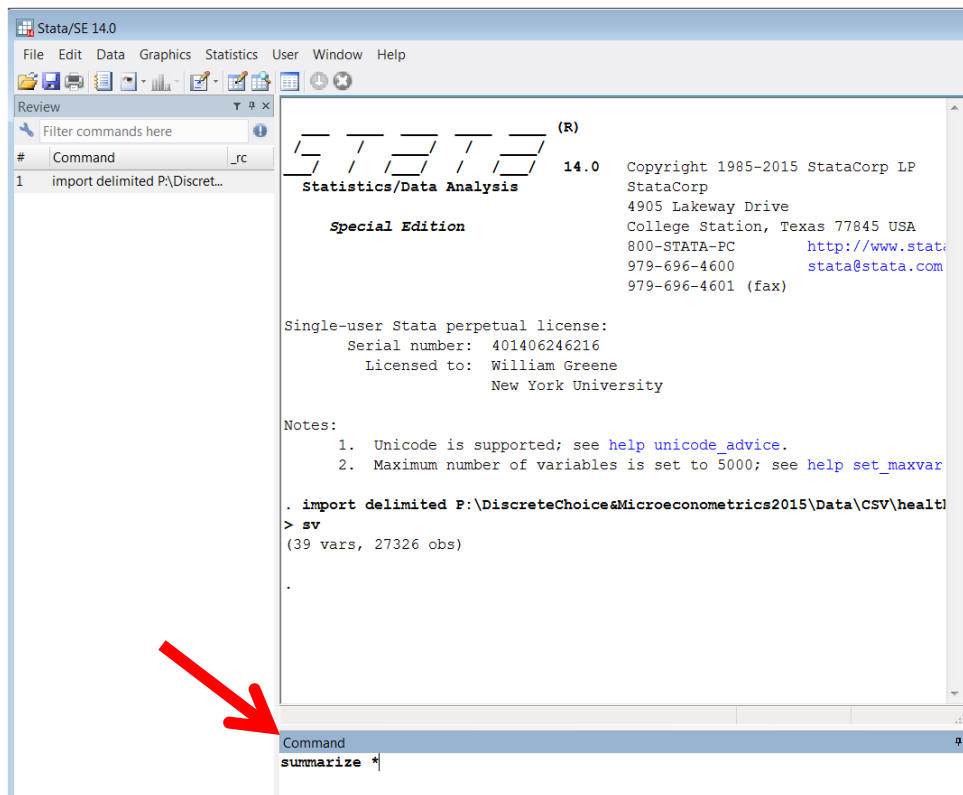


1. Import your data using a .csv file. File -> Import -> Text data (delimited *.csv...)

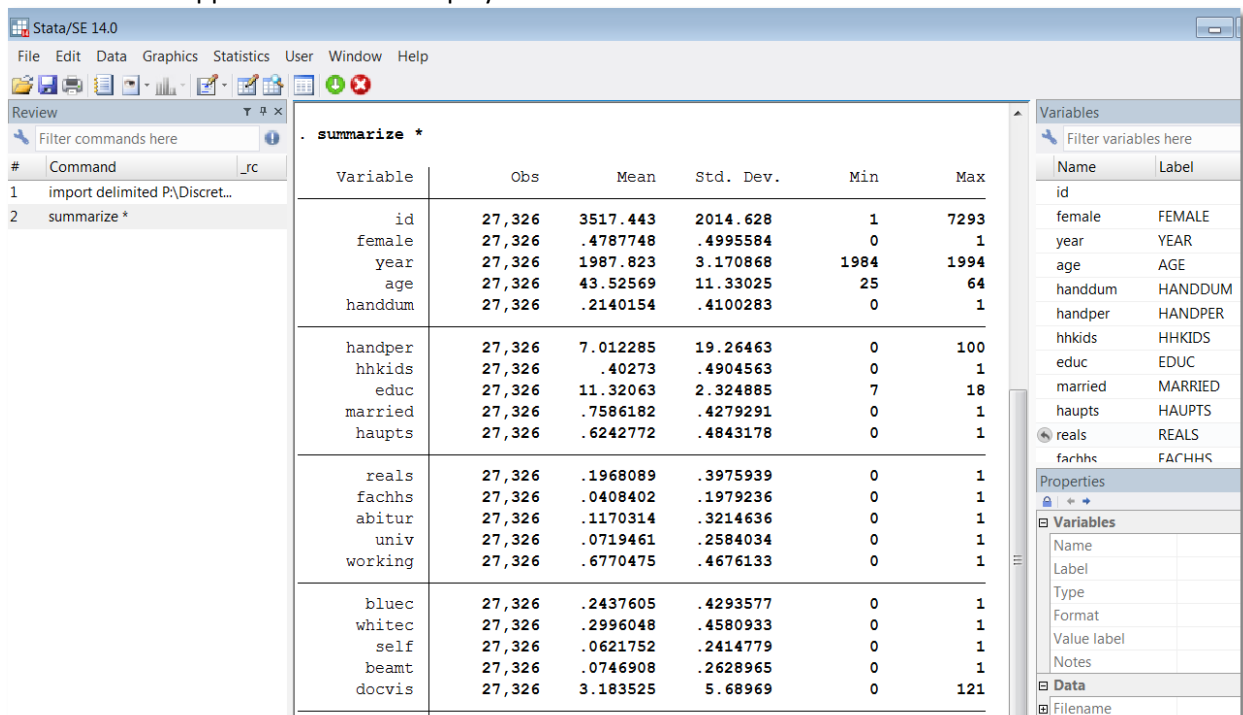
This will launch an explorer. Make your way to your .csv format data file.



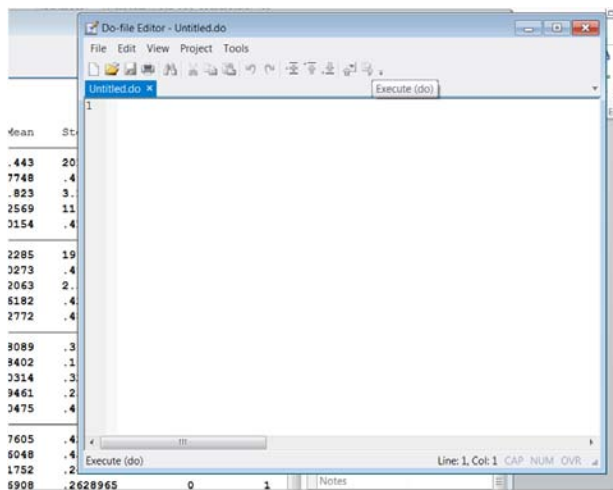
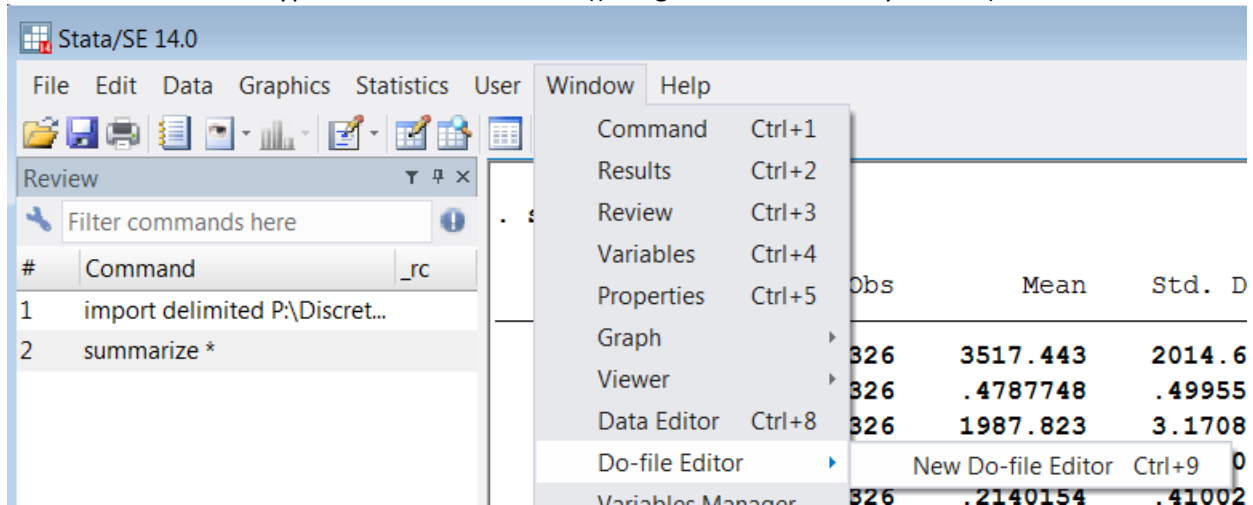
2. Commands can be entered one line at a time in the command window.



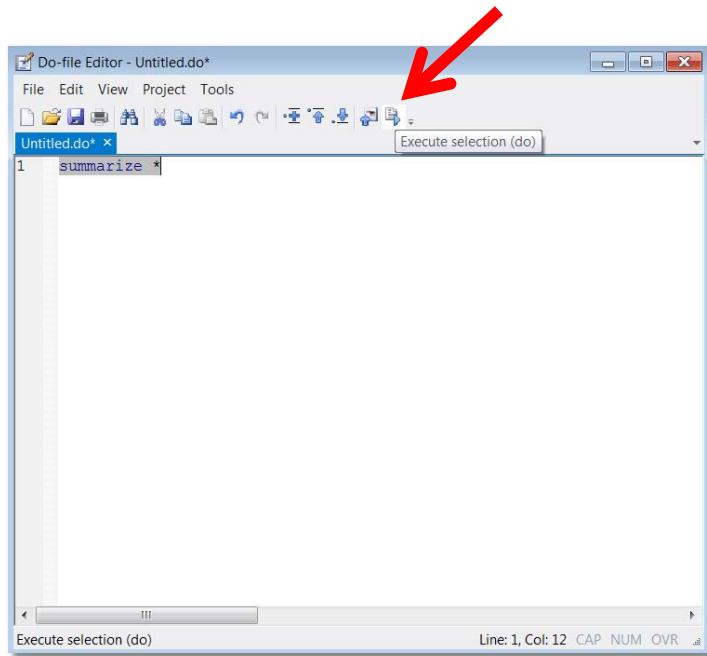
3. Results will appear in the main display window.



3. The do file editor is a much more convenient way to drive the program.
 - a. Open the editor with Window -> Do-file Editor -> New Do-file Editor
 - b. Commands will be typed in the do file editor ((along with other text if you wish))



Select Do-file editor.
New editing window appears.



Type command(s) in window
Highlight
Press Play (do) button. The red arrow points at the do button.

Results will appear in the results window.

You may pile as many commands as you like in the editor and execute them one at a time, in blocks, or all at once. Highlight the desired commands and press the play button.