

[+Aswath](#) [Search](#) [Images](#) [Maps](#) [Play](#) [YouTube](#) [News](#) [Gmail](#) [Drive](#) [Calendar](#) [More](#)

NYSE:JPM

Aswath Damodaran

Share



## Finance

JPMorgan Chase &amp; Co. (NYSE:JPM)

Add to portfolio

More results

## Company

Summary  
News  
Option chain  
Related companies  
Historical prices  
Financials

**52.31** -0.40 (-0.76%)

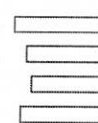
After Hours: 52.31 0.00 (0.00%)

Oct 15, 6:30PM EDT

 NYSE real-time data - Disclaimer  
Currency in USD

Range 52.18 - 53.04  
52 week 38.83 - 56.93  
Open 52.91  
Vol / Avg. 17.54M/21.67M  
Mkt cap 196.64B  
P/E 7.19

Dividend 0.38/1.168.01 -0.87%  
EPS 7.27  
S&P 500 1698.06 -0.71%  
Shares 3.76B  
Financials 1.54 -0.67%  
JPMdown 74% 52.31 -0.76%



224

## Markets

## News

## Portfolios

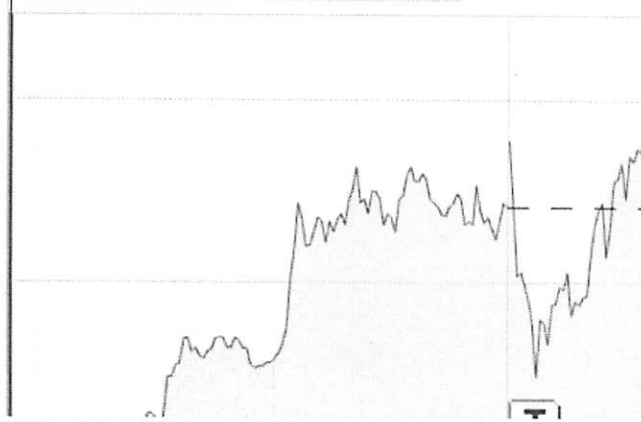
## Stock screener

## Google Domestic Trends

## Recent Quotes (180 days)

		chg   %
JPM	52.31	-0.400
SALE	34.11	-0.390
FB	49.50	-0.010
TSLA	183.94	+4.22
MSFT	34.49	+0.040
MRK	46.57	-0.180
AAPL	498.68	+2.64
PBR.A	16.92	+0.03
TBT	77.44	+0.120

Create portfolio from quotes

Compare:   ☐ Dow Jones [more »](#)
**Zoom: 1d 5d 1m 3m 6m YTD 1y 5y**
**Oct 11, 2013 - Oct 15, 2013 -0.21 (-0.4%)**
Settings | Technicals | [Link to this view](#)

Volume delayed by 15 mins

## Related companies

Show:

Add or remove

Most Recent Annual

columns

Company name	Valuation			F
	Price	Mkt Cap	Enterprise value	
<b>JPM</b> JPMorgan Chase & Co.	52.31	196.64B		56
WFC Wells Fargo & Co	41.54	219.07B		48
KEY KeyCorp	11.86	10.84B		2
PNC PNC Financial Ser...	72.51	38.54B		10
USB U.S. Bancorp	36.88	67.84B		12
FMER Firstmerit Corp	22.55	3.72B		
UBS UBS AG (US listing)	20.58	77.54B		12
AXP American Express ...	75.25	81.18B		3
ITUB Itau Unibanco Hol...	14.81	70.22B		4
NRDEF NORDEA AB EUR 0.3963	11.90	49.61B		
NBCB First NBC Bank Ho...	24.73	441.67M		

 Sector: Financials >  
Industry: Banks - NEC

[More from Revere Data »](#)

## News

Relevance | Date

JPMorgan Chase & Co. (JPM): JPMorgan - Still A Buy  
Seeking Alpha - 7 hours ago

Earnings News: JPMorgan Chase & Co. (JPM), Wells Fargo & Co. (WFC) [V...  
International Business Times - Oct 11, 2013

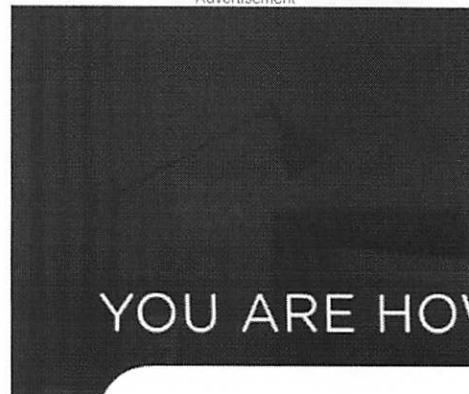
JPMORGAN CHASE & CO : India Seeks Inclusion Into J.P. Morgan Local-Bond ...  
4-traders - 6 hours ago

JPMORGAN CHASE & CO : J.P. Morgan Launches Code for Good Challenge in ...  
4-traders - 12 hours ago

JPMorgan Chase & Co. (JPM): JPMorgan: Analyzing Key Metrics That Drive Th...  
Seeking Alpha - 14 hours ago

 All news for JPMorgan Chase & Co. » [Subscribe](#)

Advertisement



## Events

Add JPM to my calendars

Nov 13, 2013  
JPMorgan Chase & Co. at Bank of America Merrill Lynch Banking & Financial Services Conference - 12:10PM EST -

Nov 8, 2013  
JPMorgan Chase & Co. at BancAnalysts Association of Boston Conference - 8:15AM EST -

Oct 17, 2013  
Porto Seguro SA at JP Morgan Roadshow-Rio de

[Weather](#) [Games](#) [Groups](#) [Answers](#) [Screen](#) [Flickr](#) | [More](#)

Search Finance

Search Web

Sign In

Mail

HOME

INVESTING

NEWS

PERSONAL FINANCE

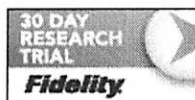
MY PORTFOLIOS

EXCLUSIVES

Enter Symbol

Look Up

Tue, Oct 15, 2013, 6:51pm EDT - US Markets are closed

Dow  $\downarrow$ 0.87% Nasdaq  $\downarrow$ 0.56%

JPMorgan Chase &amp; Co. (JPM) - NYQ

Add to Portfolio

Like

552

**52.31**  $\uparrow$ 0.40 (0.76%) 4:00PM EDT | After Hours : **52.40**  $\uparrow$ 0.09 (0.17%) 6:45PM EDT - Nasdaq Real Time Price

## Cash Flow

Get Cash Flow for:

GO

View: [Annual Data](#) | [Quarterly Data](#)

All numbers in thousands

Period Ending	Jun 30, 2013	Mar 31, 2013	Dec 31, 2012	Sep 30, 2012
Net Income	6,496,000	6,529,000	5,692,000	5,708,000
Operating Activities, Cash Flows Provided By or Used In				
Depreciation	1,435,000	974,000	1,404,000	1,294,000
Adjustments To Net Income	2,337,000	3,038,000	(817,000)	483,000
Changes In Accounts Receivables	(6,796,000)	(12,687,000)	2,415,000	5,289,000
Changes In Liabilities	33,525,000	(3,686,000)	(8,023,000)	(1,209,000)
Changes In Inventories	-	-	-	-
Changes In Other Operating Activities	31,523,000	25,796,000	(5,182,000)	(28,224,000)
<b>Total Cash Flow From Operating Activities</b>	<b>68,520,000</b>	<b>19,964,000</b>	<b>(4,511,000)</b>	<b>(16,659,000)</b>
Investing Activities, Cash Flows Provided By or Used In				
Capital Expenditures	-	-	-	-
Investments	2,295,000	3,527,000	(16,527,000)	(2,710,000)
Other Cash flows from Investing Activities	(8,000)	(37,000)	(2,000)	-
<b>Total Cash Flows From Investing Activities</b>	<b>(86,790,000)</b>	<b>(55,455,000)</b>	<b>(50,104,000)</b>	<b>(3,759,000)</b>
Financing Activities, Cash Flows Provided By or Used In				
Dividends Paid	(1,485,000)	(1,242,000)	(1,478,000)	(1,223,000)
Sale Purchase of Stock	326,000	(1,700,000)	-	1,234,000
Net Borrowings	16,026,000	31,710,000	(4,831,000)	4,460,000
Other Cash Flows from Financing Activities	(12,939,000)	(588,000)	60,395,000	24,283,000
<b>Total Cash Flows From Financing Activities</b>	<b>1,928,000</b>	<b>28,180,000</b>	<b>54,086,000</b>	<b>28,754,000</b>
Effect Of Exchange Rate Changes	32,000	(888,000)	909,000	141,000
<b>Change In Cash and Cash Equivalents</b>	<b>(16,310,000)</b>	<b>(8,199,000)</b>	<b>380,000</b>	<b>8,477,000</b>

Sign Up for a Free Trial to EDGAR Online Premium!

Get the critical business and financial information you need for more than 15,000 U.S. public companies.

Sign Up Now - Learn More

Currency in USD.

[Weather](#)
[Games](#)
[Groups](#)
[Answers](#)
[Screen](#)
[Flickr](#)
[More](#)

Search Finance

Search Web

Sign In

Mail

HOME

INVESTING

NEWS

PERSONAL FINANCE

MY PORTFOLIOS

EXCLUSIVES

Enter Symbol

Look Up

Tue, Oct 15, 2013, 6:48pm EDT - US Markets are closed

Dow  $\downarrow$ 0.87% Nasdaq  $\downarrow$ 0.56%

OPEN AN ACCOUNT

JPMorgan Chase &amp; Co. (JPM) - NYSE

Add to Portfolio

Like

552

**52.31**  $\uparrow$ 0.40 (0.76%) 4:00PM EDT | After Hours : **52.40**  $\uparrow$ 0.09 (0.17%) 6:45PM EDT - Nasdaq Real Time Price

## Income Statement

Get Income Statement for:

GO

View: Annual Data | Quarterly Data

All numbers in thousands

Period Ending	Jun 30, 2013	Mar 31, 2013	Dec 31, 2012	Sep 30, 2012
Total Revenue	25,164,000	24,505,000	20,268,000	26,086,000
Cost of Revenue	-	-	-	-
Gross Profit	25,164,000	24,505,000	20,268,000	26,086,000
Operating Expenses				
Research Development	-	-	-	-
Selling General and Administrative	15,714,000	15,271,000	15,656,000	15,189,000
Non Recurring	-	-	-	-
Others	199,000	769,000	1,047,000	1,971,000
Total Operating Expenses	-	-	-	-
Operating Income or Loss	9,298,000	9,082,000	4,221,000	10,715,000
Income from Continuing Operations				
Total Other Income/Expenses Net	-	-	-	-
Earnings Before Interest And Taxes	11,739,000	11,576,000	9,462,000	10,639,000
Interest Expense	2,441,000	2,494,000	2,512,000	2,653,000
Income Before Tax	9,298,000	9,082,000	6,950,000	7,986,000
Income Tax Expense	2,802,000	2,553,000	1,258,000	2,278,000
Minority Interest	-	-	-	-
Net Income From Continuing Ops	6,496,000	6,529,000	5,692,000	5,708,000
Non-recurring Events				
Discontinued Operations	-	-	-	-
Extraordinary Items	-	-	-	-
Effect Of Accounting Changes	-	-	-	-
Other Items	-	-	-	-
Net Income	6,496,000	6,529,000	5,692,000	5,708,000
Preferred Stock And Other Adjustments	-	-	-	-
Net Income Applicable To Common Shares	6,101,000	6,131,000	5,321,000	5,346,000

Sign Up for a Free Trial to EDGAR Online Premium!

Get the critical business and financial information you need for more than 15,000 U.S. public companies.

Sign Up Now - Learn More

Currency in USD.

HOME	INVESTING	NEWS	PERSONAL FINANCE	MY PORTFOLIOS	EXCLUSIVES
------	-----------	------	------------------	---------------	------------

 Enter Symbol 

Tue, Oct 15, 2013, 6:49pm EDT - US Markets are closed

Dow  $\uparrow$ 0.87% Nasdaq  $\uparrow$ 0.56%

OPEN AN ACCOUNT



JPMorgan Chase &amp; Co. (JPM) - NYSE

  552

**52.31**  $\uparrow$ 0.40 (0.76%) 4:00PM EDT | After Hours: **52.40**  $\uparrow$ 0.09 (0.17%) 6:45PM EDT - Nasdaq Real Time Price

## Balance Sheet

Get Balance Sheet for:  

View: Annual Data | Quarterly Data

All numbers in thousands

Period Ending	Jun 30, 2013	Mar 31, 2013	Dec 31, 2012	Sep 30, 2012
<b>Assets</b>				
<b>Current Assets</b>				
Cash And Cash Equivalents	593,039,000	521,502,000	471,833,000	439,678,000
Short Term Investments	-	-	-	-
Net Receivables	81,562,000	74,208,000	60,933,000	62,989,000
Inventory	-	-	-	-
Other Current Assets	-	-	-	-
<b>Total Current Assets</b>	-	-	-	-
Weather	Games	Groups	Answers	Screen
Flickr	More			
1,652,057,000				1,645,603,000
14,519,000				14,271,000
48,175,000				48,178,000
9,849,000				9,721,000
<b>Accumulated Amortization</b>	-	-	-	-
Other Assets	111,421,000	102,101,000	101,775,000	100,844,000
Deferred Long Term Asset Charges	-	-	-	-
<b>Total Assets</b>	<b>2,439,494,000</b>	<b>2,389,349,000</b>	<b>2,359,141,000</b>	<b>2,321,284,000</b>
<b>Liabilities</b>				
<b>Current Liabilities</b>				
Accounts Payable	211,432,000	193,089,000	195,240,000	203,042,000
Short/Current Long Term Debt	345,978,000	334,280,000	322,106,000	334,947,000
Other Current Liabilities	1,202,950,000	1,202,507,000	1,193,593,000	1,139,611,000
<b>Total Current Liabilities</b>	-	-	-	-
Long Term Debt	414,805,000	394,087,000	380,942,000	386,073,000
Other Liabilities	-	-	-	-
Deferred Long Term Liability Charges	-	-	-	-
Minority Interest	55,090,000	58,300,000	63,191,000	57,918,000
Negative Goodwill	-	-	-	-
<b>Total Liabilities</b>	<b>2,230,255,000</b>	<b>2,182,263,000</b>	<b>2,155,072,000</b>	<b>2,121,591,000</b>
<b>Stockholders' Equity</b>				
Misc Stocks Options Warrants	-	-	-	-
Redeemable Preferred Stock	-	-	-	-
Preferred Stock	11,458,000	9,958,000	9,058,000	9,058,000
Common Stock	4,105,000	4,105,000	4,105,000	4,105,000
Retained Earnings	114,216,000	109,402,000	104,223,000	99,888,000
Treasury Stock	(14,071,000)	(13,010,000)	(12,002,000)	(12,177,000)
Capital Surplus	93,416,000	93,161,000	94,604,000	94,431,000
Other Stockholder Equity	115,000	3,470,000	4,081,000	4,388,000
<b>Total Stockholder Equity</b>	<b>209,239,000</b>	<b>207,086,000</b>	<b>204,069,000</b>	<b>199,693,000</b>
<b>Net Tangible Assets</b>	<b>149,896,000</b>	<b>148,988,000</b>	<b>146,045,000</b>	<b>141,794,000</b>

Sign Up for a Free Trial to EDGAR Online Premium!

Get the critical business and financial information you need for more than 15,000 U.S. public companies.

Sign Up Now - Learn More