

# Getting Started with the S&P Capital IQ Platform

Sounds financial decisions must start with an excellent grasp of your universe. Your subscription to the S&P Capital IQ platform gives you the research tools and extensive reports needed to elevate your understanding of markets and make informed decisions. We encourage you to get started right away, and our product training and support teams can help.

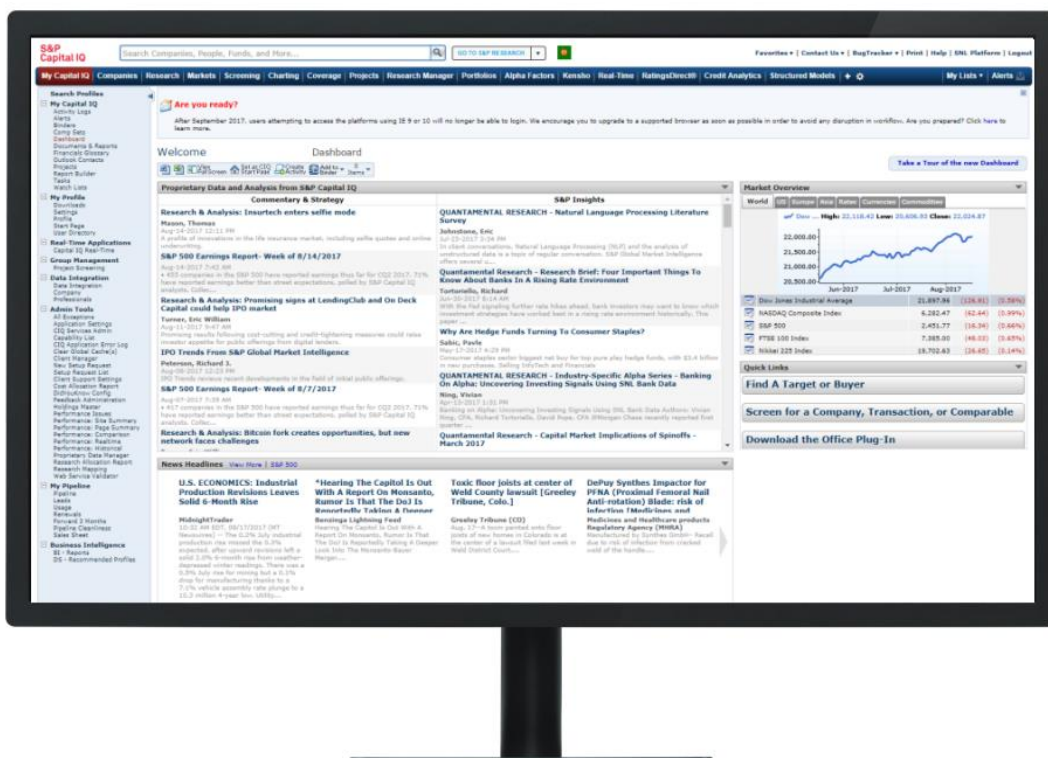
## S&P Capital IQ product training – one-on-one or on demand

As a new client, you will receive a dedicated relationship manager to assist you in getting started by providing an overview of what’s available and where to find it.

The Help section of the web platform contains valuable training materials including sections on Getting Started, Release Notes, Popular Functions, and Popular Topics to browse at your convenience.

## Around-the-clock support for your around-the-clock schedule

Nothing satisfies us more than helping you complete a project or meet a deadline, no matter what time it is. Our support team has extensive training on the product suite, capital markets and industry-specific workflows, and is available 24x7x365 to help troubleshoot and execute a wide range of complex, time-sensitive tasks. From converting Excel models to run on S&P Capital IQ platform formulas to providing training on the PresCenter application, our support team is here to help you solve your toughest challenges and develop actionable solutions.



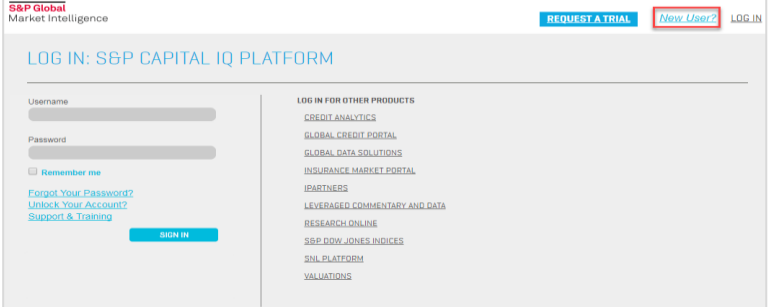
# How to Register as a New User

## 1: Access the platform

Visit: [www.capitaliq.com](http://www.capitaliq.com)

Click on “New User?”

1



## 2: Submit your email

Enter your email address, then click “Submit.”

Be sure to use your company’s domain.

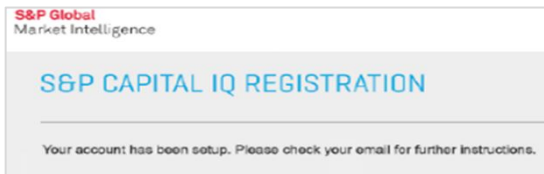
2



## 3: Check your email

You will be directed to a page that tells you to check your email to continue setting up your account.

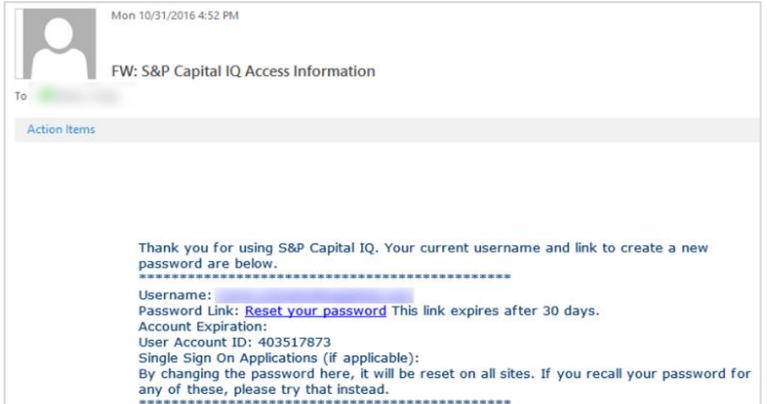
3



## 4: Reset your password

You will receive an email with the headline “S&P Capital IQ Access Information.” Within the email, click the link “Reset your password.”

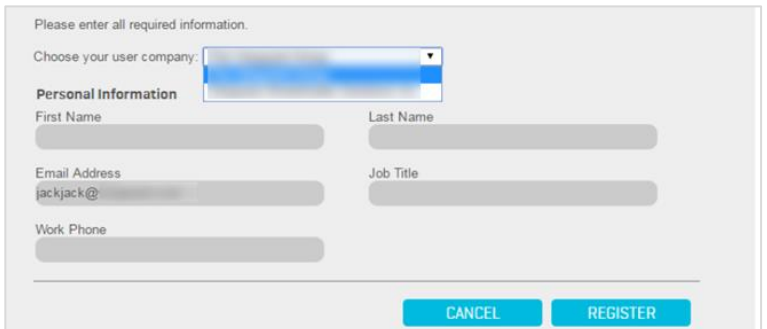
4



## 5: Update personal info

Once you reset your password, you will be prompted to update your personal information. When finished, click “Register.”

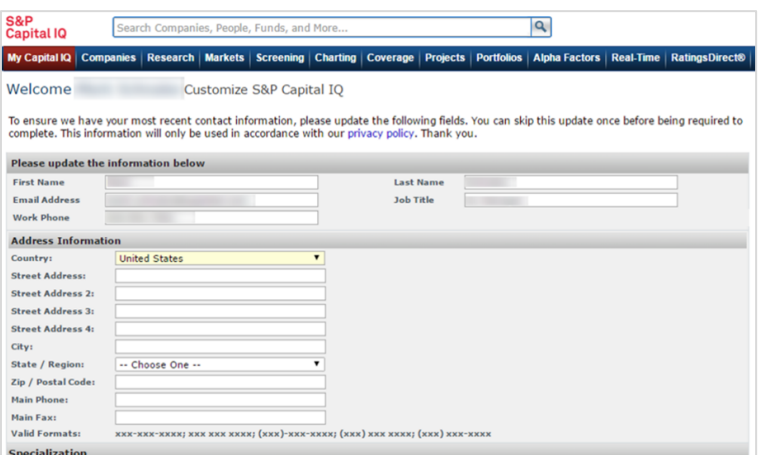
5



## 6: Self-identification

To complete the registration process, log in to the S&P Capital IQ platform (<http://www.capitaliq.com>) using your new credentials. You will be taken to a self-identification page where you will fill out your information to customize your account.

6



## For Returning Users

Students who had access previous to Fall 2017, are not able to self-register. In this case please go to [capitaliq.com](http://capitaliq.com) and click on the 'Forgot Your Password' link and reset your password using your full Stern email address as the username (ex. [abc123@stern.nyu.edu](mailto:abc123@stern.nyu.edu)). You should be able to login after resetting your password.

## About S&P Global Market Intelligence

S&P Global Market Intelligence integrates financial and industry data, research, and news into tools that help track performance, generate alpha, identify investment ideas, understand competitive and industry dynamics, perform valuation, and assess risk.

### CONTACT US

#### The Americas

+1-888-806-5541

#### Europe,

#### Middle East

#### & Africa

+44-20-7176-1234

#### Asia-Pacific

+852-2533-3565

For instructions and videos on how to set up portfolios in the SNL platform, visit the Online Help Guide and search 'Portfolio'.

Copyright© 2017 by S&P Global Market Intelligence, a division of S&P Global Inc. All rights reserved. No content, including by framing or similar means, may be reproduced or distributed without the prior written permission of S&P Global Market Intelligence or its affiliates. The content is provided on an "as is" basis.

**[spglobal.com/marketintelligence](http://spglobal.com/marketintelligence)**